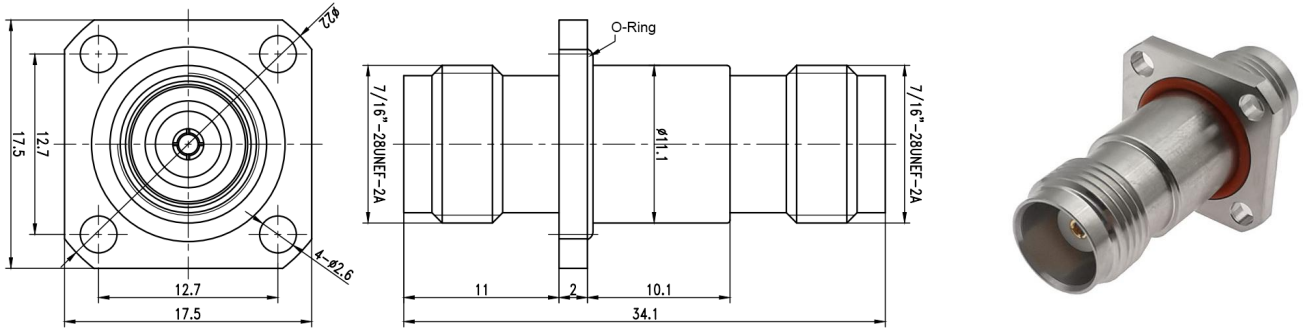


Drawing(mm)



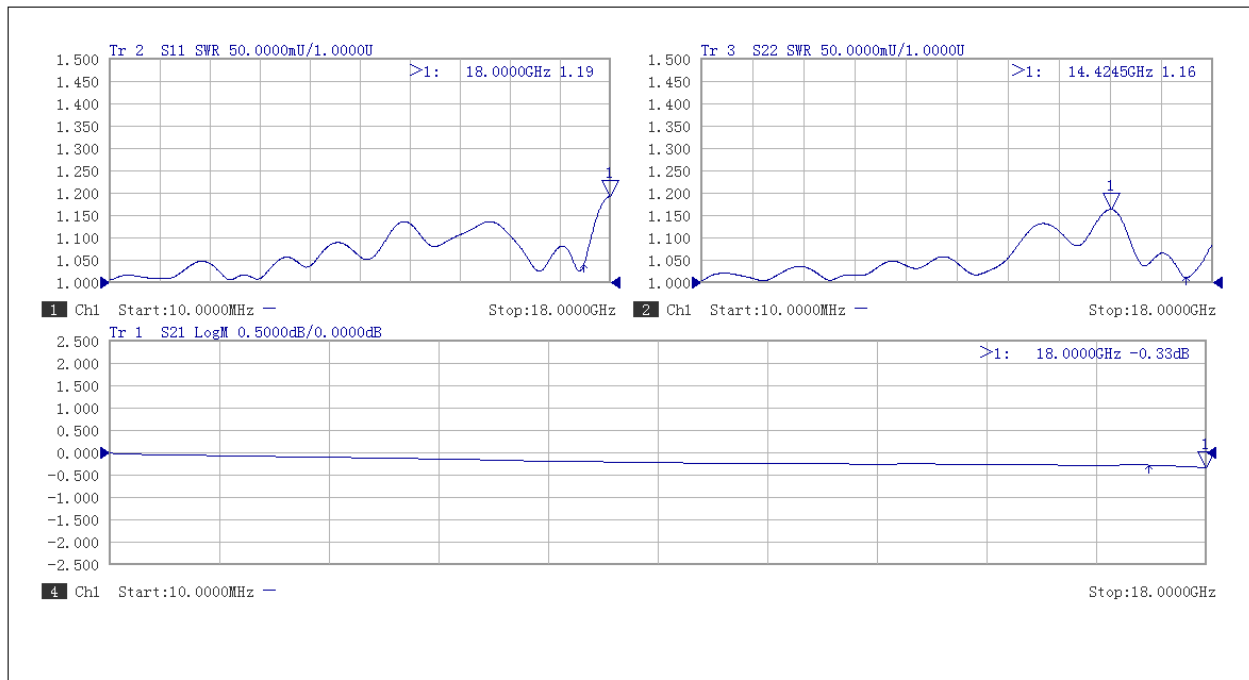
Electrical & Environmental

|                 |                      |
|-----------------|----------------------|
| Impedance       | 50 ohm               |
| Frequency Range | DC-18 GHz            |
| VSWR            | 1.2 max              |
| Operating Temp  | -55°C to +165°C      |
| Interface       | TNCA per MIL-STD-348 |

Material

|                |                              |
|----------------|------------------------------|
| Connector Body | Passivated stainless steel   |
| Center Contact | Gold plated beryllium copper |
| Insulator      | PTFE                         |

Typical Test Data



火