

# IxLoad — Data Test Solution

Validate that Application Service Meets Customer Expectations

## Problem: Endangered QoE for End User Data Applications

In today's highly competitive landscape, organizations must meet stringent network quality requirements to deliver the best customer experience. However, a widening array of applications and an increasing number of users is making it harder — and more expensive — than ever to ensure high-quality end-user experience across converged multiplay services and application delivery platforms.

## Solution: A Comprehensive Test Solution for Data Application Delivery Platforms

The Keysight **IxLoad** Data test solution delivers the industry's most scalable and flexible solution for testing high-performance application-aware devices and networks. Network operators now have the means to measure independent- and multi-protocol performance, session capacity, and transaction latencies of applications and data center infrastructures in a single integrated platform.

# Table of Contents

Solution: A Comprehensive Test Solution for Data Application Delivery Platforms ..... 1

Key Features ..... **Error! Bookmark not defined.**

Product Capabilities ..... 4

Specifications ..... **Error! Bookmark not defined.**

Platform Options ..... 17

Technology Solutions ..... 18

IxLoad Ordering Information ..... 18

## Highlights

- Roll out new web, email, database, and storage services with confidence.
- Test application performance with HTTP/3 over IETF QUIC (RFC 9000).
- Quickly resolve performance and security issues with comprehensive analytics.
- Minimize post-production issues and improve QoE by validating in the lab.
- Automate end-to-end with REST and other APIs to meet automation and orchestration requirements.
- Reduce test time and learning curve with library of pre-built test cases and call flows.

## Key Features

- Test the scalability and performance of application-aware networks and devices by emulating HTTP, HTTP/2, HTTP/3, SSL — including TLS 1.3, FTP, and Email clients and servers as well as NAS/SAN, and DataCenter testing.
- Test the performance limits and long-term stability of content-aware devices such as application delivery controllers, web servers, firewalls, web caches, and WAN acceleration devices
- Measure the ability of a multiservice transport network to deliver data, voice, and video by intermixing data traffic with delay- and jitter-sensitive multimedia traffic

# Product Capabilities

## Data Application Protocols

**IxLoad** delivers a wide variety of fully stateful web, data transfer, email, database, and storage protocols to emulate a complete multiplay user environment. Combined with the APS-100/400GE, CloudStorm, or PerfectStorm hardware platforms, **IxLoad** delivers unprecedented scale and performance. In addition, IxLoad's comprehensive network support, advanced test timelines, and automatic goal seek capabilities enables users to comprehensively assess the performance of their service delivery networks and determine application-level performance in a single integrated solution.

**IxLoad** data protocol emulations enable users to validate the following capabilities:

Technology	Capabilities
Web, file transfer	Validate performance limits and long-term stability of content-aware devices such as application delivery controllers, web servers, firewalls, web caches, and WAN acceleration devices
Email	Benchmark the capacity of email servers and mail transfer agents. Assess the impact of content filtering of spam and other malicious content on the performance of mail delivery systems
Storage	<ul style="list-style-type: none"><li>• Validate data center storage infrastructures by simulating RoCEv2, SAN, NAS, and other data center application traffic</li><li>• Simulate various workload profiles to validate the impact of storage on enterprise applications</li></ul>
Infrastructure services	<ul style="list-style-type: none"><li>• Validate the performance of critical network services like DNS and RADIUS (AAA Services) under high loads</li></ul>
TCP / UDP	Benchmark the baseline Layer 4 and stateless forwarding performance on content and application-aware devices before attempting more complex test scenarios
Replay	<ul style="list-style-type: none"><li>• Reproduce anomalous behavior that may be caused by a particular packet exchange or inter-packet delay</li><li>• Determine the performance impact of unclassified or proprietary application traffic on multiplay networks</li></ul>

# Playlist

Playlist is an **IxLoad** infrastructure feature that is used to sequence through a contiguous list of items such as filenames, usernames/passwords, web pages, DNS queries. The playlist is a CSV file that typically contains columns with contiguous data. **IxLoad** supports the playlist functionality for selected protocols like HTTP, SSL, and DNS, and selected fields of those protocols.

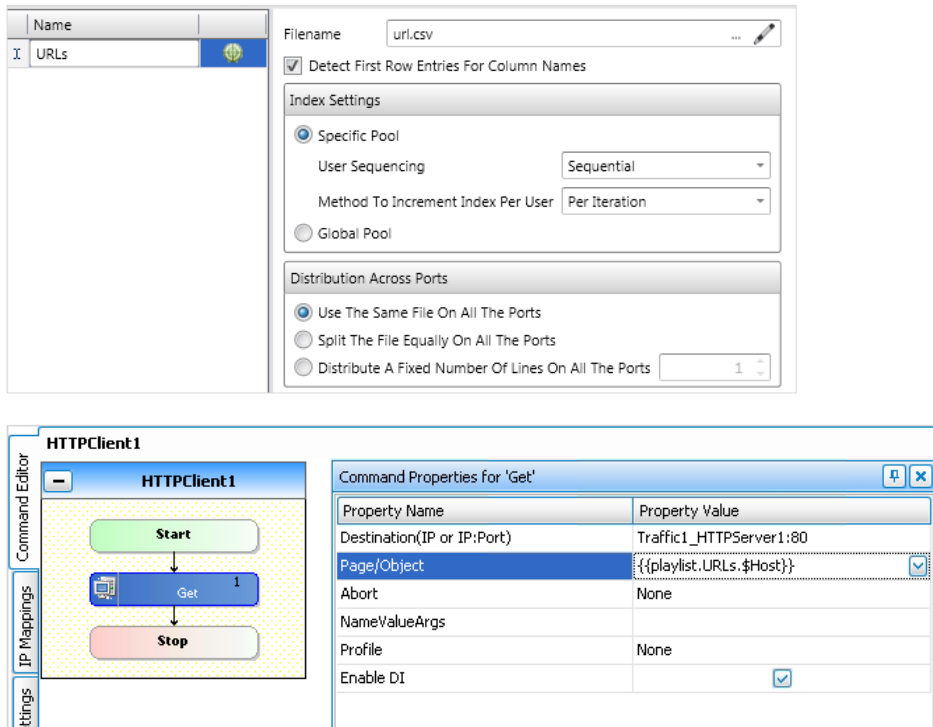


Figure 1. Playlist profile applied to HTTP

## Random Data Generation Engine

Random Data Generation Engine (RDGE) enables user to generate traffic with varying randomness and compressibility to stress different components of WAN optimizers and caching devices such as CPU, disk, and memory. IxLoad supports the RDGE functionality for selected protocols like those for HTTP and Storage.

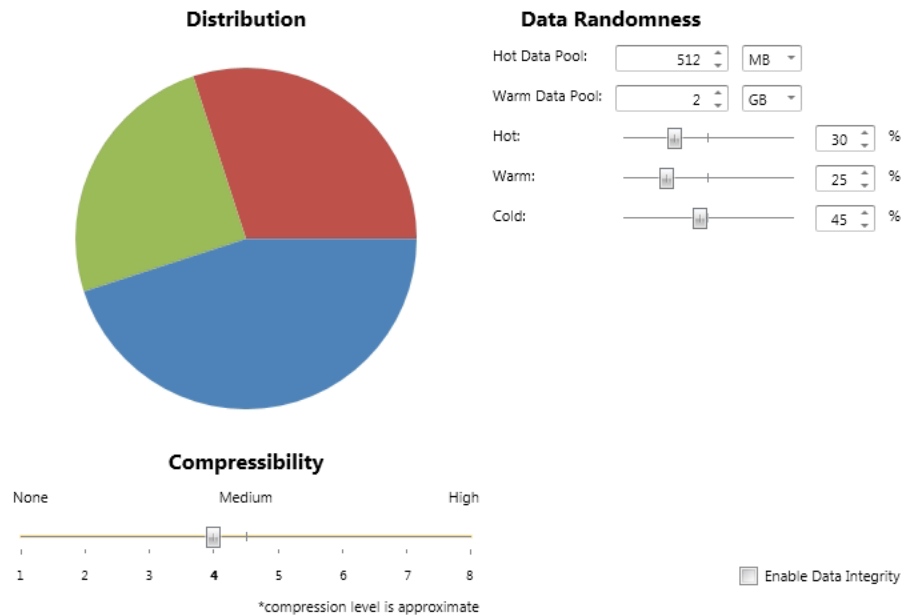


Figure 2. Random data generation profile

## RFC 6349: Framework for TCP Throughput Testing

RFC 6349 provides a methodology for measuring end-to-end TCP throughput in managed IP networks. The primary goal is to offer a better indication of user experience by optimizing TCP and IP parameters. This framework specifies how to measure key metrics like Path MTU, Round-Trip Time (RTT), and Bottleneck Bandwidth (BB) to ensure accurate TCP throughput testing. IxLoad's RFC 6349 test suite uses pre-canned tests to provide a comprehensive assessment of network performance.

## TLS 1.3

By realistic emulating of HTTP client and servers with TLS 1.3 support conforming to RFC 8446, IxLoad helps validating and benchmarking the TLS 1.3 capable network devices and architectures.

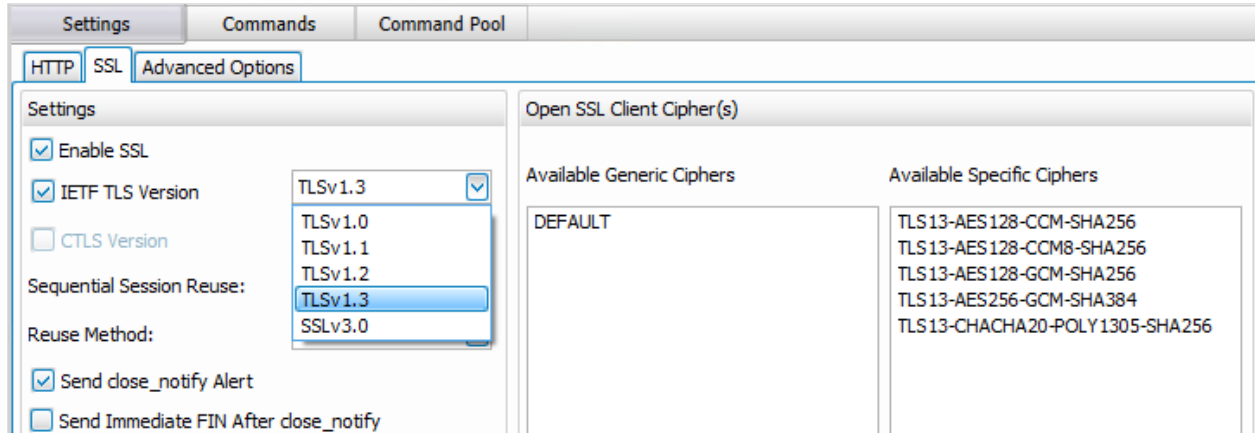


Figure 3. TLS 1.3 configuration page for HTTP client activities

## Specifications

### HTTP/3

Version	HTTP/3 over IETF QUIC (RFC 9000)
IP support	IPv4
Emulation	Client and Server
Features	<ul style="list-style-type: none"> <li>• Option to use multiple streams per connection</li> <li>• QUIC stream settings to set maximum stream data size</li> <li>• 0-RTT and 1-RTT with/without early data</li> <li>• Option to dump secret key per session (for debugging purposes)</li> <li>• Synthetic and Real file payload</li> <li>• Support for Jumbo frames</li> <li>• RFC 8899: PLPMTUD Path MTU Discovery</li> <li>• Supported on APS-100/400GE, CloudStorm, PerfectStorm and PerfectStorm ONE hardware</li> </ul>
Commands	GET, POST and PUT
Web browsers	Firefox, Safari, Chrome, Mozilla Custom headers that can be saved and reused
Statistics	<ul style="list-style-type: none"> <li>• HTTP simulated users, concurrent connections, connections per second, connection attempts per second, throughput, and transaction per second.</li> <li>• QUIC stream level statistics</li> <li>• QUIC packets statistics</li> <li>• Latency statistics</li> <li>• 0-RTT statistics</li> <li>• Failure and Error statistics</li> </ul>

### HTTP/2

Version	HTTP/2
IP support	IPv4 and IPv6
Emulation	Client and Server
Features	<ul style="list-style-type: none"> <li>• Supports HTTP cookies and HTTP redirection on HTTP/2 clients</li> </ul>

## HTTP/3

---

	<ul style="list-style-type: none"><li>• Supports HPACK compression/decompression on HTTP/s clients</li><li>• Supports all mandated frame types (except PRIORITY)</li><li>• Option to enable/disable SSL</li><li>• Supports TLS 1.2 and TLS 1.3</li><li>• Support for ALPN</li><li>• Option to use multiple streams per connections</li><li>• Supports playlists that easily create large numbers of user sessions and URLs with unique credentials</li><li>• Supports sequence generator option in Page/Object field</li><li>• User realism with control of HTTP commands using transaction aborts and “Think” times</li><li>• Configurable TOS and DSCP bit settings</li><li>• User-configurable HTTP server page responses</li><li>• Support for customizing response code, page size, and page content on servers</li><li>• Supported on CloudStorm, PerfectStorm and PerfectStorm ONE hardware and on IxLoad VE (Virtual Edition)</li></ul>
Commands	GET, HEADER, PUT, POST and DELETE
Web browsers	<ul style="list-style-type: none"><li>• Microsoft Internet Explorer 5/6, Mozilla, Firefox, and Safari</li><li>• Custom headers that can be saved and reused</li></ul>
Statistics	<ul style="list-style-type: none"><li>• Average server response times, Total transaction times</li><li>• HTTP state level statistics, HTTP Response code statistics</li></ul>

---

## HTTP

---

Version	HTTP 1.0 and HTTP 1.1
IP support	IPv4 and IPv6
Emulation	Client and Server
Features	<ul style="list-style-type: none"><li>• Supports HTTP pipelining, cookies, and HTTP redirection</li><li>• Supports proxy server commands</li><li>• Supports decompression on HTTP clients</li><li>• Supports Content-MD5 integrity check</li><li>• Supports Chunked Encoding processing on HTTP clients</li><li>• Option to use multiple TCP connections per user</li><li>• User realism with control of HTTP commands using transaction aborts and “Think” times</li><li>• User-defined pages on HTTP server</li><li>• Supports sequence generators and playlists that easily create large numbers of user sessions and URLs with unique credentials</li><li>• Data integrity validation that pinpoints the exact offset of data corruption during transit</li><li>• Data randomization with user-defined Hot/Cold/Warm and Compressibility profiles to validate WAN optimizers’ data reduction performance and application latency improvements</li><li>• Configurable TOS and DSCP bit settings</li><li>• Configurable HTTP headers for each request</li></ul>

---

## HTTP

---

	<ul style="list-style-type: none"><li>• Inspection of data payloads for user-specified text</li><li>• Option for HTTP servers to listen on multiple TCP ports</li><li>• User-configurable HTTP server page responses</li><li>• Support for customizing response code, page size, cookies, and page content on servers</li></ul>
Commands	GET, HEADER, PUT, POST and DELETE
Web browsers	<ul style="list-style-type: none"><li>• Microsoft Internet Explorer 5/6, Mozilla, Firefox, and Safari</li><li>• Custom headers that can be saved and reused</li></ul>
Statistics	<ul style="list-style-type: none"><li>• Detailed HTTP Client and Server statistics</li><li>• Average server response times, HTTP state level statistics</li><li>• HTTP Response code statistics, Per-URL statistics</li></ul>

---

## SSL

---

Version	SSLv3.0, TLS v1.0, TLS v1.1, TLS v1.2 and TLS v1.3
IP support	IPv4 and IPv6
Features	<ul style="list-style-type: none"><li>• SSL session reuse</li><li>• Selectable ciphers and keys for SSL handshake</li><li>• Hardware acceleration for selected ciphers including ECC ciphers</li><li>• Support for 1K, 2K, 3K and 4K Key sizes</li><li>• Configurable client- and server-side certificates for HTTPS connections</li><li>• Supports DH ephemeral key exchange</li><li>• Configurable SSL record size per transaction</li></ul>
Statistics	<ul style="list-style-type: none"><li>• Detailed SSL/TLS Client and Server Statistics</li><li>• Average server response times</li><li>• SSL state level statistics</li><li>• SSL Response code statistics</li><li>• Per-URL statistics</li></ul>

---

## FTP

---

IP support	IPv4 and IPv6
Emulation	Client and Server
Modes	Active and Passive
Commands	LOGIN, PASSWORD, CD, GET, MKD, RETRIEVE, PUT, STORE, QUIT
Features	<ul style="list-style-type: none"><li>• Configurable TOS and DSCP bit settings</li><li>• Option for FTP server to listen on multiple TCP ports</li><li>• User-defined pages on FTP server</li><li>• User realism with control of FTP commands and timing using "Think" times</li></ul>
Statistics	<ul style="list-style-type: none"><li>• Detailed FTP Client and Server Statistics</li><li>• Average server response times</li></ul>

---

## SMTP

IP support	IPv4 and IPv6
Emulation	Client and Server
Commands	OPEN, EHLO, HELO, MAIL, NOOP, RSET, SLEEP, QUIT
Features	<ul style="list-style-type: none"><li>• Option to send user specified email messages using SMTP and IMAP clients and POP3 servers</li><li>• Option to use sequence generators to create thousands of user sessions and various values in email headers</li><li>• Support for importing emails from a standard format and customize</li><li>• Option to configure email servers to listen for requests on multiple TCP ports</li><li>• Ability to customize email headers (from, to, cc, bcc), mime types, mail body and attachments. Custom mail headers can be inserted. The size of email body and attachments can also be randomized</li><li>• Ability to create complex command sequences using the built-in programming structures such as 'Loop Begin' and 'Loop End'</li><li>• User realism with control over user commands using Think times</li><li>• Support for POP3 authentication based on passwords or APOP shared secrets</li><li>• Configurable TOS and DSCP bit settings</li></ul>
Statistics	<ul style="list-style-type: none"><li>• Detailed</li><li>• SMTP Client and Server statistics</li></ul>

## POP3

IP support	IPv4 and IPv6
Emulation	Client and Server
Commands	<ul style="list-style-type: none"><li>• OPEN, STAT, DELE, NOOP, RSET, LIST, UIDL, RETR</li><li>• TOP, QUIT</li></ul>
Features	<ul style="list-style-type: none"><li>• Option to send user specified email messages using SMTP and IMAP clients and POP3 servers</li><li>• Option to use sequence generators to create thousands of user sessions and various values in email headers</li><li>• Support for importing emails from a standard format and customize</li><li>• Option to configure email servers to listen for requests on multiple TCP ports</li><li>• Ability to customize email headers (from, to, cc, bcc), mime types, mail body and attachments. Custom mail headers can be inserted. The size of email body and attachments can also be randomized</li><li>• Ability to create complex command sequences using the built-in programming structures such as 'Loop Begin' and 'Loop End'</li><li>• User realism with control over user commands using Think times</li><li>• Support for POP3 authentication based on passwords or APOP shared secrets</li><li>• Configurable TOS and DSCP bit settings</li></ul>
Statistics	Detailed POP3 Client and Server statistics

## IMAP

IP support	IPv4 and IPv6
------------	---------------

## IMAP

Emulation	Client and Server
Commands	<ul style="list-style-type: none"><li>• OPEN, CAPABILITY, NOOP, LOGOUT, LOGIN, SELECT</li><li>• FETCH, LIST, STORE, CREATE, DELETE, EXPUNGE, CLOSE</li></ul>
Features	<ul style="list-style-type: none"><li>• Option to send user specified email messages using SMTP and IMAP clients and POP3 servers</li><li>• Option to use sequence generators to create thousands of user sessions and various values in email headers</li><li>• Support for importing emails from a standard format and customize</li><li>• Option to configure email servers to listen for requests on multiple TCP ports</li> <li>• Ability to customize email headers (from, to, cc, bcc), mime types, mail body and attachments. Custom mail headers can be inserted. The size of email body and attachments can also be randomized</li><li>• Ability to create complex command sequences using the built-in programming structures such as 'Loop Begin' and 'Loop End'</li><li>• User realism with control over user commands using Think times</li><li>• Support for POP3 authentication based on passwords or APOP shared secrets</li><li>• Configurable TOS and DSCP bit settings</li></ul>
Statistics	Detailed IMAP Client and Server statistics

## RoCEv2

IP support	IPv4
Emulation	RoCEv2 Requesters and Responders
Commands	<ul style="list-style-type: none"><li>• Read</li><li>• Write</li></ul>
Features	<ul style="list-style-type: none"><li>• Emulate RoCEv2 operations with control of throughput, number of Queue Pairs and congestion control parameters (DCQCN)</li><li>• Mix of RoCEv2 and HTTP traffic to validate the congestion mechanisms of the two protocols do not interfere with negative effects</li><li>• Stateful RoCEv2 traffic at linerate with full support for ECN, CNP and PFC</li></ul>
Statistics	<ul style="list-style-type: none"><li>• Aggregated and per Queue Pair statistics are exposed:</li><li>• RoCEv2 Throughput, Connections, Transactions, Latency</li><li>• Number of I/Os sent, received, successful, failed per command type</li><li>• Congestion control metrics: number of ECNs, CNPs and PFCs; number of CNP before PFC</li></ul>

## CIFS

Version	CIFSv1, CIFSv2/2.1 and SMB3.0
IP support	IPv4 and IPv6
Emulation	Client and Server
CIFSv1 high-level commands	<ul style="list-style-type: none"><li>• Session Setup, Write to file, Read from file, Copy download, Copy upload, Copy, Delete, Move download,</li></ul>

## CIFS

	<ul style="list-style-type: none"><li>• Move upload, Move, Create, Delete, Rename,</li><li>• Browse, Scan all, Exit</li></ul>
CIFSv2 high-level commands	<ul style="list-style-type: none"><li>• Session Setup, Read from File, Write to File,</li><li>• Copy upload, Copy download, Move upload,</li><li>• Move download, Delete, Exit</li></ul>
CIFSv2 low-level commands	Negotiate, Session Create, Tree connect, Create, Read, Write, Set Info, Query Info, Cancel, Flush, Change Notify, Echo, Close, Tree Disconnect, Logoff, IOCTL, Query Directory, LOCK
SMB3.0 high-level commands	Session Setup, Read from File, Write to File, Copy upload, Copy download, Move upload, Move download, Delete, Exit
SMB3.0 low-level commands	Cancel, Change Notify, Close, Create, Echo, Flush, Log Off, Negotiate, Query Info, Read, Session Create, Set Info, Tree Connect, Tree Disconnect, Write
Client options	<ul style="list-style-type: none"><li>• Authentication mechanism, Dialect Selection</li><li>• Primary domain selection, Unicode support</li><li>• Lock Selection – Exclusive, Batch and Lease</li><li>• Pipeline, Command timeout, Data chunk size</li><li>• Enable Random Data, Max Connection per Second</li><li>• Unique Random Number Settings</li><li>• Signing Settings, Encryption</li></ul>
Server options	<ul style="list-style-type: none"><li>• Authentication level and mechanism</li><li>• User login credentials, Random data, Data integrity</li><li>• Date modifier per read command</li><li>• Server file structure, Signing Settings</li></ul>
Features	<ul style="list-style-type: none"><li>• CIFS client and server emulation</li><li>• Compliant with SMB 1.0, 2.0/2.1, and 3.0 dialect</li><li>• Support for NTLM, NTLMv2, and Kerberos authentication</li><li>• High-level commands designed to deliver ease of use by emulating user-level actions such as copy, delete, move, rename, read, and write files</li><li>• Low-level atomic commands for complete flexibility to emulate various OS behaviors by providing commands that match the specification</li><li>• Byte-by-byte data integrity validation</li><li>• Per-command transactional latency measurements</li><li>• Scalable file system simulation on the sever side</li><li>• Complete integration with the Random Data Generation engine to validate the caching mechanisms in WAN optimization devices</li><li>• Unique Random number generation support.</li><li>• DEC-RPC support in SMB2</li><li>• SMB2 and SMB3.0 signing, SMB3.0 encryption</li></ul>
Statistics	Detailed SMB Client and Server statistics

## NFS

Version	NFSv3, NFSv4 and NFSv4
IP support	IPv4 and IPv6

## NFS

Emulation	Client
NFSv3 high-level commands	Open, Read, Write, Delete, Move, Rename, Copy upload, Copy download, Move upload, Move download, Scan all, Exit
NFSv3 low-level commands	<ul style="list-style-type: none"><li>• MNT, UMNT, Mount Connect, Mount Close, NFS Connect,</li><li>• NFS Close, Create, Remove, Read, Write, Get Attribute,</li><li>• Set Attribute, Lookup, Access, Make Directory, Read Directory,</li><li>• Remove Directory, ReadDirPlus, Commit, FS Info,</li><li>• FileSystem Stats, Link, Lookup, Make Node, Path Conf,</li><li>• Make Node, Read Link, Symbolic Link</li></ul>
NFSv4 high-level commands	<ul style="list-style-type: none"><li>• Open, Read, Write, Delete, Move, Rename, Copy upload,</li><li>• Copy download, Move upload, Move download, Scan all, Exit</li></ul>
NFSv4 low-level commands	<ul style="list-style-type: none"><li>• Connect, NFS Connect, NFS Close, Create, Remove, ReadDIR,</li><li>• Putrootfh, Open, Confirm, Set Client ID, Set Client Id_Confirm,</li><li>• Write, Get Attribute, Set Attribute, Lookup, Access, Lock, LockU,</li><li>• Lookup, Release Lock Owner, Set Client ID Confirm</li></ul>
NFSv4.1 low-level commands	<ul style="list-style-type: none"><li>• NFS Connect, Open, Read, Write, Access, Close, NFS Close,</li><li>• Create Session, Destroy Session, Destroy Client ID,</li><li>• Exchange ID, Get Attribute, Set Attribute, Lock, LockU, Lookup,</li><li>• PutRootFH, Reclaim Complete, Remove</li></ul>
Client options	<ul style="list-style-type: none"><li>• Authentication mechanism, Command timeout</li><li>• Data chunk size, Enable ESM</li><li>• Enable TOS/DSCP, Command timeout</li></ul>
Features	<ul style="list-style-type: none"><li>• NFSv3, v4, and v4.1 client emulation</li><li>• High-level commands designed to deliver ease-of-use by emulating user-level actions such as copy, delete, move, rename, read, and write files</li><li>• Low-level atomic commands for complete flexibility to emulate various OS behaviors by providing commands that match the specification</li><li>• Byte-by-byte data integrity validation</li><li>• Per command transactional latency measurements</li><li>• File and byte range locking</li><li>• Access Control list with ACE</li><li>• Share reservation</li><li>• Playlists and sequence generators</li><li>• Conversion of workload trace or captures to emulate and customize field workloads</li><li>• Stop on error</li><li>• Compounding support in NFSv4 and above</li><li>• User-level debugs and logs</li></ul>
Statistics	<ul style="list-style-type: none"><li>• 140+ NFSv3 Client Statistics</li><li>• 160+ NFSv4 Client Statistics</li></ul>

## ISCSI

IP support	IPv4 and IPv6
Emulation	Initiator and Target
Commands	Login, Logout, I/O, Nop-Out, Loop Begin/End, Think
Initiator options	<ul style="list-style-type: none"><li>• Auto Discovery</li><li>• Authentication method: CHAP or None</li><li>• User login credentials</li><li>• Data integrity with Synthetic Payload and User-defined pattern</li><li>• Pipeline, Multiple Connections per session</li><li>• Error Recovery, Login Redirection and Async Logout</li><li>• Key Value Pair custom configuration for: Header Digest, Data Digest, InitialR2T, Immediate Data, MaxRecvDataSegmentLength, MaxBurstLength, FirstBurstLength, MaxConnection, ErrorRecoveryLevel, DefaultTimeToWait and DefaultTime ToRetain</li><li>• Support for ESM, ToS/DSCP and VLAN Priority</li></ul>
Target options	<p>Authentication method: CHAP with MD5 or None</p> <ul style="list-style-type: none"><li>• User login credentials</li><li>• Data integrity with Synthetic Payload</li><li>• Key Value Pair custom configuration for: Header Digest, Data Digest, InitialR2T, Immediate Data, MaxRecvDataSegmentLength, MaxBurstLength, FirstBurstLength</li><li>• Custom target pool configuration</li><li>• Support for ESM, ToS/DSCP and VLAN Priority</li><li>• Customizable target port</li></ul>
I/O configuration options	<ul style="list-style-type: none"><li>• Command type selection: Read, Write, Read Then Write, Write Then Read and Random Read/Write</li><li>• Read: 6, 10, 12, 16; Write: 6, 10, 12, 16</li><li>• Random read percentage</li><li>• Payload type for Write IO: Dummy or Synthetic Pattern Generation</li><li>• Logical block address: Sequential, Random and Full Random Access</li><li>• Specify data transfer length as Total Transfer Length, iSCSI per Command Transfer length and Alignment size</li><li>• Block Address Overflow Handling: Truncate transfer length or Adjust start position</li></ul>
Features	<ul style="list-style-type: none"><li>• Stateful iSCSI Initiator and Target emulations</li><li>• Authentication method: CHAP with MD5 or None</li><li>• Automatic discovery of the external Targets</li><li>• Complete flexibility to control the I/O operations<ul style="list-style-type: none"><li>◦ Read/Write distribution</li><li>◦ User can control the number of SCSI Read and Writes needed to complete a high-level IO</li><li>◦ Flexibility introduced to have randomness in Logical Block Address access within an IO</li><li>◦ Ability to specify Alignment Block sizes per SCSI read/write commands</li></ul></li><li>• Data integrity validation with Keysight pattern and user specified 32-Bit data pattern</li><li>• Customizable target portal with arbitrary Target LUNs and capacity</li></ul>
Statistics	<ul style="list-style-type: none"><li>• 100+ iSCSI Client and Server Statistics</li></ul>

## DNS

Version	DNS
IP support	IPv4 and IPv6
Emulation	Client and Server
Queries	A, AAAA, CNAME, SOA, NS, MX, PTR
Features	<ul style="list-style-type: none"><li>• Ability to configure server to listen on multiple TCP ports</li><li>• Sequence generator support to create hundreds of login sessions using unique user credentials</li><li>• UDP and TCP transport</li><li>• Option to use multiple zones and unique/non-unique resource records</li><li>• Ability to import named configurations to DNS server</li><li>• Ability to configure EDNS (RFC 6891) buffer size</li></ul>
Statistics	Detailed DNS Client and Server Statistics

## Application Replay

IP support	IPv4
Emulation	Peers – Initiator, Responder and Both
Commands	<ul style="list-style-type: none"><li>• Custom flow – TCP, Custom flow – UDP,</li><li>• Custom flow – IP, Custom flow - ETH</li></ul>
Options	<ul style="list-style-type: none"><li>• TCP/UDP Replay<ul style="list-style-type: none"><li>◦ Destination Peer or DUT</li><li>◦ Override responder port derived from the capture during replay</li><li>◦ Specify the PCAP file location</li><li>◦ Configure filters for initiator's and responder's IP and ports</li></ul></li><li>• IP/Ethernet Replay<ul style="list-style-type: none"><li>◦ Preserve the IP headers</li><li>◦ Maintain the inter-packet timing or modify the timing of the original capture by a factor</li></ul></li><li>• Advanced Options<ul style="list-style-type: none"><li>◦ Concurrent flow support to simulate users initiating more than one flow at one time</li><li>◦ Persist flows over single TCP connection Validate Per-flow and Latency statistics with the advanced statistics option</li><li>◦ Out of sequence packet handling for UDP</li><li>◦ Payload Verification Options<ul style="list-style-type: none"><li>◦ Verify content of payload against expected payload</li><li>◦ Verify length of payload against expected length</li></ul></li></ul></li></ul>
Features	<ul style="list-style-type: none"><li>• Industry's first solution to replicates captured traffic at variable performance levels</li><li>• Replay application flows with IP replay while maintaining inter-packet timing and packet boundaries</li><li>• Ethernet packet injection from a capture file using unidirectional Ethernet replay</li><li>• Emulates application traffic alongside other IxLoad emulated traffic, including HTTP, VoIP, and IPTV</li></ul>

## Application Replay

---

	<ul style="list-style-type: none"><li>• Replay application traffic targeted at a DUT such as a server load balancer (SLB). Supports detailed measurement statistics and real-time graphs</li><li>• Supports conditional statistics (per-IP, per-VLAN, per-User), per-flow statistics, and latency statistics</li><li>• Emulate line rate traffic application traffic</li></ul>
Statistics	<ul style="list-style-type: none"><li>• 40+ Application Replay Statistics</li><li>• 40+ Application Replay Per Flow Statistics</li></ul>

---

## TCP

---

IP support	IPv4 and IPv6
Emulation	Client and Server
Commands	TCP Exchange, TCP Send, TCP Idle and Think
Options	<ul style="list-style-type: none"><li>• Payloads<ul style="list-style-type: none"><li>◦ Synthetic or Real Files for both TCPEXchange and TCPSend commands</li><li>◦ For Synthetic payloads users can define ranges. Payload will be picked randomly from the range during run time</li></ul></li><li>• Receive Mode<ul style="list-style-type: none"><li>◦ Defines how much data/payload client must expect from server in TCP Exchange command</li><li>◦ In “Automatic” mode client expects same amount of data as it sends</li><li>◦ In “Byte Count” mode client expects to receive byte count specified in the “Receive Length...” field. Byte Count mode only applies to External Servers</li></ul></li></ul>
Features	<ul style="list-style-type: none"><li>• Leverages AppLibrary Engine to deliver high scale and very realistic TCP traffic</li><li>• Works with external/real servers and DUTs for One Arm Tests</li><li>• Can be used in conjunction with other AppFlows and even other TCP Protocol Flows</li><li>• Allows users to select payload types (real/synthetic), payload sizes, destination ports, and connection teardown methods</li><li>• Still uses all existing TCP and IP settings in network stack</li><li>• Deterministic performance distributions</li><li>• Comprehensive real-time analysis with per-flow granularity level</li></ul>
Statistics	Extensive real time per flow stats

---

## Stateless Peer

---

Features	<ul style="list-style-type: none"><li>• Peer-to-peer activity allows initiators and responders to source and sink UDP and IP packet streams</li><li>• Dynamic Control Plane</li><li>• Allow network and traffic to work in tandem to emulate real subscriber behavior</li><li>• Header definition for each packet</li><li>• Sequence field – per-packet counters</li></ul>
----------	--

---

## Stateless Peer

---

- Sequence field – per-stream counters
- Length field
- Static numeric and ASCII fields
- Unique identifier field
- Stream configuration: Payload size, Packet frequency, Parallel streams per IP address
- Device under test may modify the streams (IP addresses and port numbers)
- DiffServ control allows the configuration of the TOS for each stream
- May be combined with all other multiplay activities in IxLoad

---

### Statistics

- Initiator and Responder Peer Counts
  - Active Streams Transmitting
  - Total Bytes and Packets Sent
  - Total Bytes and Packets Sent/second
  - Tx Jitter (ns), Tx Packets Dropped
  - 15+ Global Receive Statistics
  - Per-Stream Statistics (Transmit and Receive)
- 

## Platform Options

Visit [Keysight.com](https://www.keysight.com) for More Information on IxLoad Platform Options

---

### Virtual platform

- IxLoad Virtual Edition (VE)
- 

### Public cloud

- IxLoad on AWS
  - IxLoad on Azure
  - IxLoad on GCP
  - IxLoad on Oracle
- 

### Chassis / Controller

- APS-M1010
  - XGS-12 HSL/SD/SDL Chassis
  - XGS-2 HSL/SD/SDL Chassis
- 

### Load modules

- CloudStorm Fusion 10GE, 40GE, 25GE, and 100GE
  - CloudStorm 10GE, 40GE, 25GE, and 100GE
  - CloudStorm-XP Fusion 10GE, 40GE, 25GE, and 100GE
  - CloudStorm-XP 10GE, 40GE, 25GE, and 100GE
  - PerfectStorm Fusion 10/1GE, 40GE, and 100GE
  - PerfectStorm 10/1GE, 40GE, and 100GE
  - Novus-NP 10G/1G/100M
  - Novus 10G/1G/100M
  - Novus 10G/5G/2.5G/1G/100M
  - Data Center Storage 10G/25G/40G/100G (RoCEv2 and HTTP only)
- 

### Appliances

- APS-ONE-100
  - PerfectStorm ONE Fusion 10/1GE, 40GE, and 100GE
  - PerfectStorm ONE 10/1GE, 40GE, and 100GE
-

Visit [Keysight.com](https://www.keysight.com) for More Information on IxLoad Platform Options

---

- Novus ONE appliance
  - Novus ONE Plus appliance
- 

## Technology Solutions

Visit [Keysight.com](https://www.keysight.com) for More Information on IxLoad Technology Solutions

---

- IxLoad Overview—Converged Multiplay Service Validation
  - IxLoad Virtual Edition (VE) L4-7 Application Performance Testing
  - IxLoad Data Test Solution
  - IxLoad Video Test Solution
  - IxLoad Voice Test Solution
  - IxLoad IPsec and Network Access Test Solution
  - IxLoad on AWS – Cloud Application Performance Testing
  - IxLoad on Azure – Cloud Application Performance Testing
  - IxLoad on GCP – Cloud Application Performance Testing
  - IxLoad on Oracle – Cloud Application Performance Testing
- 

## IxLoad Ordering Information

### APS-100/400GE Licenses

Part Number	Description
<b>941-0113</b>	APS-M1010 Management Controller. Supports up to 10 x APS-ONE-100 Fusion Compute Nodes (941-0110). Note: APS-ONE-100 Compute Nodes are purchased separately.
<b>941-0114</b>	Ixia, APS-ONE-100, Compute Node for IxLoad with 4x100GE front I/O ports for the APS-M1010 Management Controller (941-0115). Requires 2 optional QSFP28 transceivers/cable assemblies to be ordered separately using QSFP28-SR4-XCVR (QSFP28 100GBASE-SR4 100GE pluggable optical transceiver, MMF (multimode), 850 nm, 100 m reach) or 942-0088 (QSFP28 passive, copper, Direct Attach Cable)
<b>925-6201</b>	Ixia, IxLoad-DATA Perpetual License Bundle for a single APS-ONE-100 appliance, floating license (per controller) (925-6201). The license enables IxLoad-DATA functionality on a single APS-ONE-100 appliance (compute node). It can be used with any single appliance managed by a management controller (APS-M1010 or APS-M8400). It includes an IxLoad Framework license and support for the DATA traffic activities (HTTP, HTTPS, DNS, AppReplay, FTP, IPsec). TAA compliance is determined by the hardware on which the license is enabled.

---

## Chassis Licenses

Part Number	Description
925-3379	<p><b>IxLoad Multiplay</b>, Software Bundle, Layer 4-7 Performance Test Application Data-Video-Voice package. Includes:</p> <ul style="list-style-type: none"> <li>• <b>Data:</b> Enables support for HTTP, HTTPS, TCP Session, FTP, DNS,</li> <li>• <b>Mail</b> (SMTP, POP3 and IMAP), RADIUS, TFTP, Application-Replay, and Stateless-Peer emulations</li> <li>• <b>Video:</b> Enables support for basic RTSP, IPTV (Multicast), Video-ADVANCED (VoD), Adobe Flash Client, Apple HLS Client, Microsoft Silverlight Client, Adobe HDS Client, and DASH Client emulations. Includes Video Quality VQMON engine for up to 10Gbps and TCP VQ Video quality for TCP video traffic for up to 10 Gbps</li> <li>• <b>Voice:</b> Advanced VoIP SIP and RTP, Audio Codecs, VoLTE extensions, and Bulk SIP. Includes: Voice Quality engine for up to 10Gbps, Video Quality engine for up to 10Gbps conversational video traffic</li> <li>• <b>ADVNET:</b> Enables support for Advanced Access networking protocols such as DHCP for IP address acquisition, DHCP Server, PPP, L2TP and IPsec</li> <li>• <b>Storage:</b> iSCSI, CIFSv1, CIFSv2, SMB2, SMB3, NFSv3 Client, NFSv4 Client, NFS4.1 Client, DCBX, FCoE and FC; Note the FCoE and FC emulation is only supported on selected load modules</li> <li>• <b>Access:</b> DHCP, PPP, L2TP, L2TP, IPsec, IPsec Performance Benchmarking QuickTest and SuiteB Cryptographic, 6RD, DSLITE and IPv6 SLAAC, 8021X, and NAC</li> <li>• Note: Some features are available only on specific load modules</li> </ul>
925-3040	<p><b>IxLoad Base</b>, Optional Software, Layer 4-7 Performance Test Application; Enables support for HTTP, HTTPS, and FTP client/server emulations. Includes support for ADVNET-DHCP.</p>
925-3366	<p><b>IxLoad PLUS</b>, Software Bundle, Layer 4-7 Performance Test Application. Enables support for HTTP, HTTPS, TCP Session, FTP, Application-Replay, Stateless Peer, and DNS. Includes: support for ADVNET-DHCP to emulate DHCP enabled clients, and Software Impairment. Note: Some features are available only on specific load modules.</p>
925-3367	<p><b>IxLoad Data-ADV</b>, Software Bundle, Layer 4-7 Performance Test Application. Advanced data package. Enables support for HTTP, HTTPS, TCP, FTP, DNS, Mail (SMTP, POP3 and IMAP), RADIUS, TFTP, Application-Replay, Database, Stateless-Peer, SMB, NFS, iSCSI, and FCoE. Includes: HTTP and iSCSI QuickTest, ADVNET-DHCP to emulate DHCP enabled clients, and Software Impairment. Note: Some features are available only on specific load modules.</p>
925-3343	<p><b>IxLoad Storage</b>, Software Bundle, Layer 4-7 Performance Test Application; It enables support for iSCSI, CIFSv1 CIFSv2 (SMB2), SMB3, NFSv3 Client, NFSv4 Client, NFS4.1 Client, DCBX, FCoE and FC storage protocol emulations to validate NAS and SAN storage devices. Note the FCoE and FC emulation is only supported on selected load modules. Also includes iSCSI Performance Benchmarking QuickTest, ADVNET-DHCP to emulate DHCP enabled clients and Software Impairment on selected hardware.</p>
925-3461	<p><b>IxLoad AppLibrary Slot Bundle</b>, Software Bundle, Layer 4-7 Performance Test Application; Enables support for AppLibrary on a single load module. It includes AppLibrary Slot Feature (925-3462) and Slot Subscription service (925-3460) to access new application flows for one year; Requires previous purchase of 925-3040 (IXLOAD Base) or higher bundle.</p>

## Appliance Licenses

Part Number	Description
925-6321	<p>IxLoad Appliance Multiplay, Software Bundle, Layer 4-7 Performance Test Application. Enables <b>Data, Storage, Voice, Video, as well as Access and VPN</b> on PerfectStorm ONE and Novus ONE appliances. Includes:</p> <ul style="list-style-type: none"><li>• 925-6121 IxLoad Appliance <b>DATA and Storage</b></li><li>• 925-6112 IxLoad Appliance <b>VIDEO</b></li><li>• 925-6113 IxLoad Appliance <b>VOICE</b></li><li>• 925-6117 IxLoad Appliance <b>ACCESS and VPN</b></li></ul>
925-6104	<p><b>IxLoad Appliance Basic</b>, Optional Software, Layer 4-7 Performance Test Application. Enables IxLoad Basic functionality on PerfectStorm ONE and Novus ONE appliances. Includes: HTTP, HTTPS, DNS, ADVNET-DHCP, and Stateless Peer. Requires IxLoad Framework, 925-0001, which is free with adjoining software purchase.</p>
925-6121	<p><b>IxLoad Appliance Data</b>, Software, Layer 4-7 Performance Test Application. Enables IxLoad DATA functionality on PerfectStorm ONE and Novus ONE appliances. Includes: 925-6104 IxLoad Appliance BASIC (HTTP, HTTPS, DNS, ADVNET-DHCP, Stateless Peer) FTP, DHCP, IMAP, POP3, SMTP, TFTP, App-Replay, TCP session HTTP Quick Test, RFC 3511 Quick Test. Includes Storage: NFSv3, NFSv4, NFSv4.1, SMBv3, CIFS, CIFSv2 iSCSI, iSCSI Quick Test Requires IxLoad Framework, 925-0001, which is free with adjoining software purchase.</p>
925-3461	<p><b>IxLoad AppLibrary Slot Bundle</b>, Software Bundle, Layer 4-7 Performance Test Application; Enables support for AppLibrary on a single load module. It includes <b>AppLibrary Slot Feature</b> (925-3462) and <b>Slot Subscription</b> service (925-3460) to access new application flows for one year; Requires previous purchase of 925-3040 (IXLOAD Base) or higher bundle.</p>

## Virtual Edition Licenses

See the [IxLoad Virtual Edition \(VE\) Virtualized Multiplay Services Testing datasheet](#) for the IxLoad-VE licenses.

Keysight enables innovators to push the boundaries of engineering by quickly solving design, emulation, and test challenges to create the best product experiences. Start your innovation journey at [www.keysight.com](http://www.keysight.com).



This information is subject to change without notice. © Keysight Technologies, 2020 – 2025, Published in USA, October 27, 2025, 3120-1127.EN