

G0306B

USB 400x Video Inspection Probe

G0306B

USB 400x Video Inspection Probe

Product Introduction

April 2016

Anritsu Corporation

G0306B Product Introduction

VIP Series Support Products

Mainframe	G0306B (Fixed x400 type)	G0306A (Fixed x400 type) *Previous type
MT1x00 Network Master Series		
MT1000A Network Master Pro.	Ver.5.00 or later	Ver.1.00 or later
MT1100A Network Master Flex	Ver.5.00 or later	Ver.1.00 or later
MT9090A Network Master		
MU909014x/15x (μOTDR)	Ver.2.27 or later (Coming soon)	Ver.2.13 or later
ACCESS Master Series		
MT9083x2 Series ACCESS Master	Ver.2.02 or later	Ver.1.09 or later
Others		
MX900030A with Windows PC *	Ver.1.02 or later	Ver.1.00 or later

*: PC analysis software for G0306A/B (Support Windows XP, Windows 7(32bit, 64bit) and Windows 8(32bit, 64bit))
The MX900030A is available from the Anritsu public web site.

G0306B Product Introduction

G0306B Video Inspection Probe

Scratches and stains to optic fiber ferrule endfaces are often said to have a negative impact on transmission quality.

The G0306B can be connected to an MT1000A/MT1100A Network Master Series, MT9083x2 Series ACCESS Master, MT9090A Network Master Series (μ OTDR module) and PC, to show the state of a ferrule endface.

This function is effective for determining whether a ferrule endface is clean, and whether connector replacement is necessary due to connector scratches.



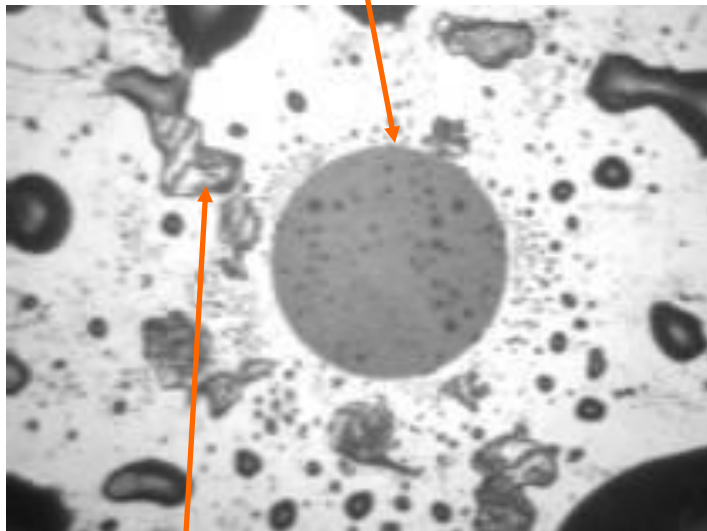
G0306B Product Introduction

When a Connector Endface is Dirty...

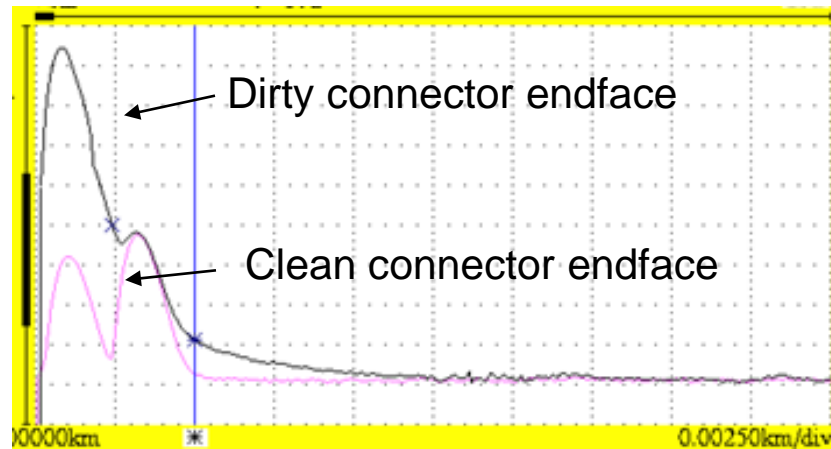
When a connector endface is dirty, it tends to produce a greater amount of reflection.

A good connection can be maintained by cleaning connector endfaces.

Optic Fiber Clad



Oil, Dust

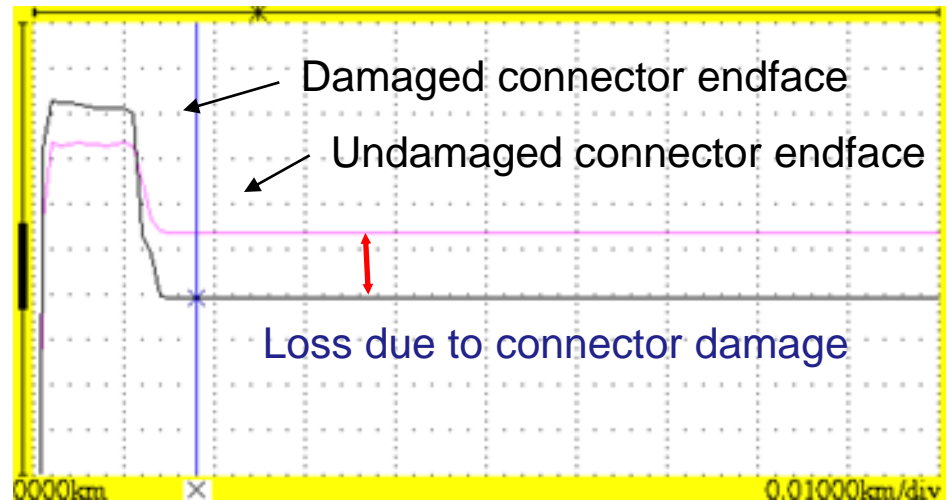
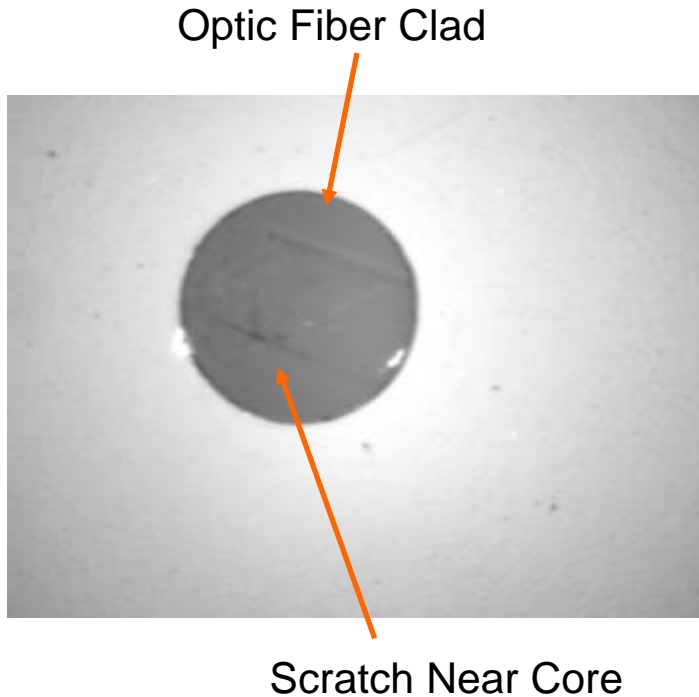


Verification through OTDR Output Port Connection

G0306B Product Introduction

When a Connector Endface is Damaged...

When a connector endface is damaged, in addition to having a greater amount of reflection, it also tends to exhibit greater splice loss. When the amount of reflection or loss caused by the damage is high, the connector port needs to be replaced.



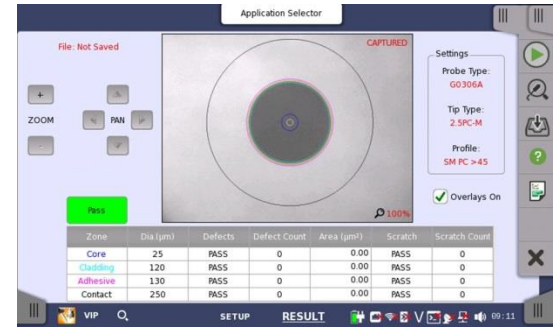
Verification through OTDR Output Port Connection

G0306B Product Introduction

●MT1000A/MT1100A Series



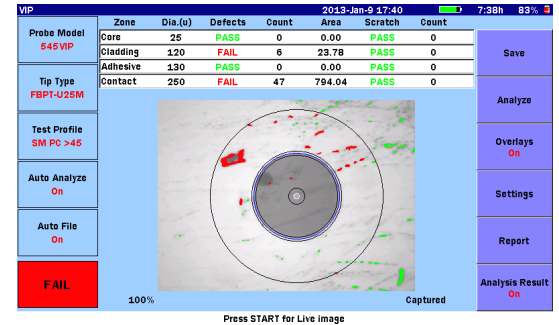
*Include Pass/Fail analysis function
(Software version 1.00 or later)*



●MT9083x2 Series ACCESS Master



*Include Pass/Fail analysis function
(Software version 2.02 or later)*

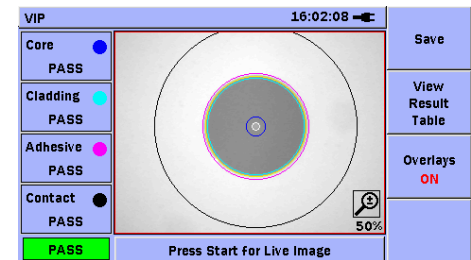


●MT9090A Series Network Master

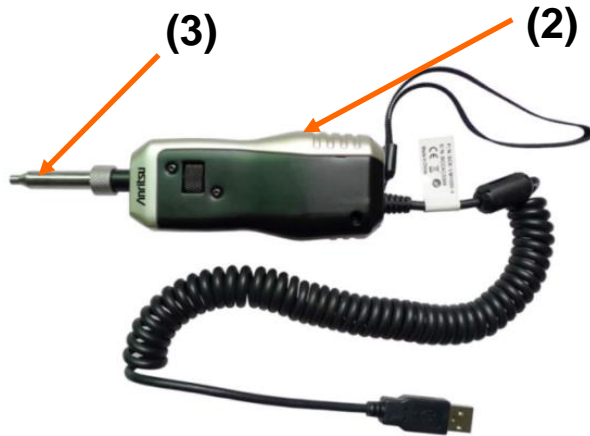
µOTDR: MU909014/15



*Include Pass/Fail analysis function
(Software version 2.27 or later)*

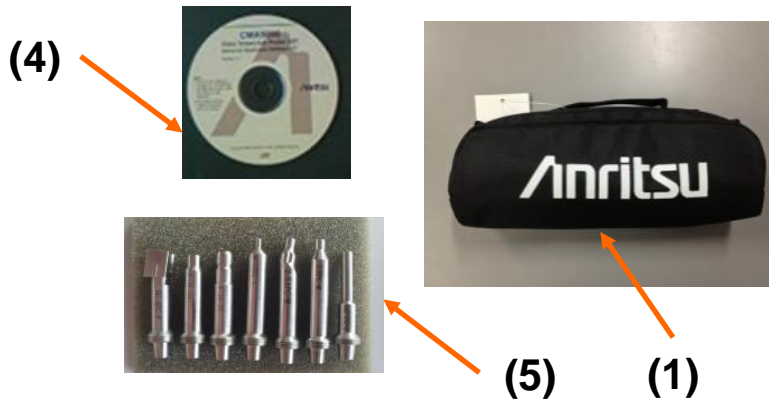


G0306B Product Introduction



G0306B Video Inspection Probe

- (1) Standard Soft case
- (2) Video Inspection Probe
- (3) Tip for measurement
- (4) CD include Operation Manual
- (5) Standard Tips



- 400x digital probe
- USB 2.0/1.1 supported
- Drivers pre-installed
- Auto Pass/Fail analysis
- Multiple connector tips

G0306B Product Introduction

G0306B Accessories



Tips are connected to the end of the VIP based on the shape of connector (adapter) to be connected. This unit comes standard with 7 types of tips.



1.25mm
PC Male



2.5mm
PC Male



2.5mm
APC Male



1.25mm
PC Female(LC)



2.5mm
PC Female(FC)



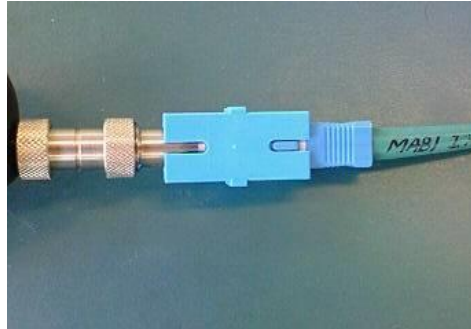
2.5mm
PC Female(SC)



2.5mm
APC Female(SC)

G0306B Product Introduction

Examples of Tip Connection



●Tips for bulk type

As this figure shows, the ferrule endface of the connected fiber can be checked via this bulk type adapter.



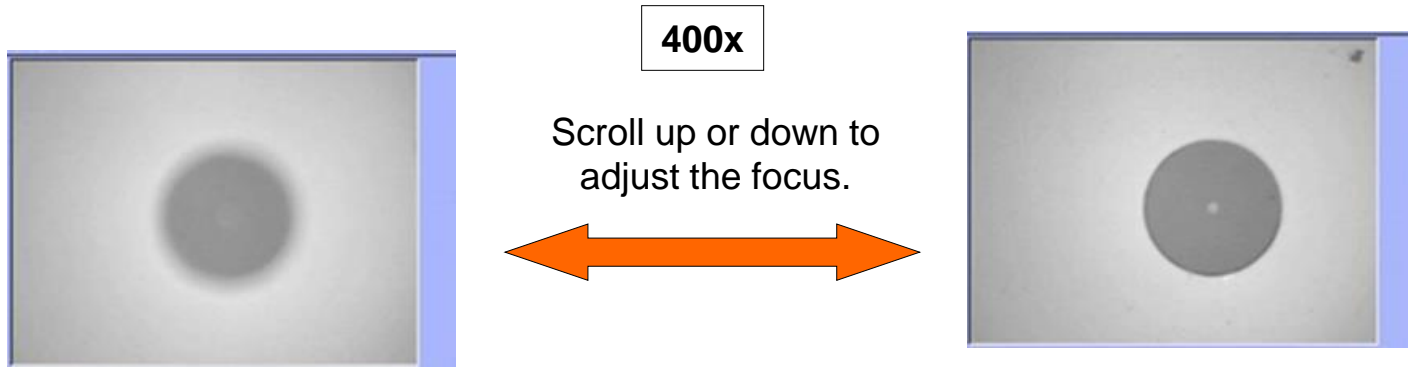
●Tips for universal type

As this figure shows, the universal type tip can be used to directly plug into the ferrule for test.

Connected to OTDR output port ferrule endface

G0306B Product Introduction

Basic Video Inspection Probe Operation

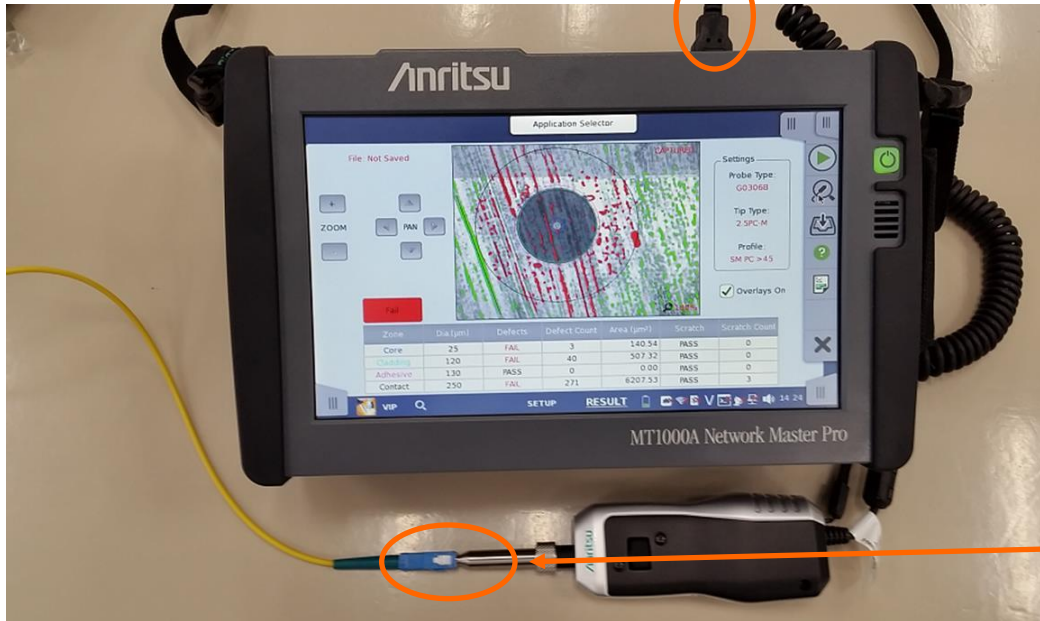


Fixed 400x focus

G0306B Product Introduction

MT1000A/MT1100A Series Measurement Example

1. The VIP USB terminal is connected to the MT1000A/MT1100A series instrument's USB port.



2. The power is turned on.
"Video Inspection Probe" is selected from the utilities menu.

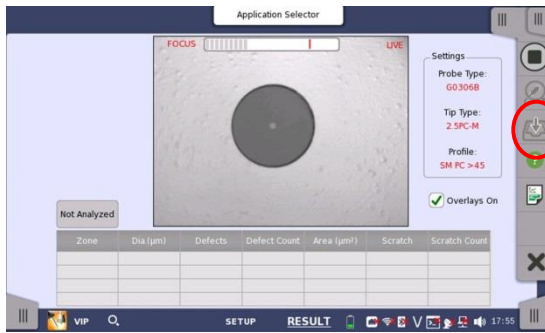
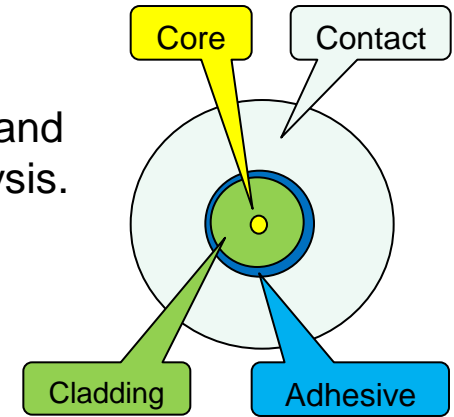
*Before starting, select the appropriate tip for the connector adapter and ferrule type to be connected to.

*Photo is the MT1000A

G0306B Product Introduction

Measurement Sequence

Adjust the focus in the Live screen, and press the Start button to begin analysis.

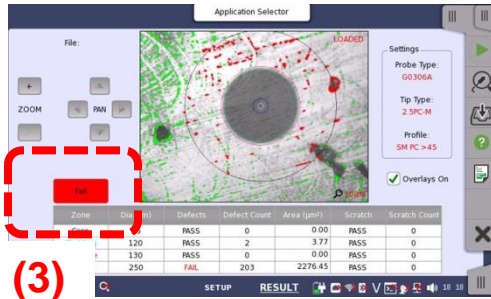


When analysis completes, the following information appears:

- Core
- Cladding
- Adhesive
- Contact

As well as a pass/fail determination for the total area for each.

G0306B Product Introduction



From the Table View, you can identify “defects” or “scratches” on the end of the fiber.

Zone	Dia.(μm)	Defects	Defect Count	Area (μm^2)	Scratch	Scratch Count
Core	25	PASS	0	0.00	PASS	0
Cladding	120	PASS	2	3.77	PASS	0
Adhesive	130	PASS	0	0.00	PASS	0
Contact	250	FAIL	203	2276.45	PASS	0

(1)

(2)

- (1) Defects in each area.
- (2) Scratches in each area.
- (3) Overall determination for each area merging (1) and (2)



Zone	Dia.(μm)	Defects	Defect Count	Area (μm^2)	Scratch	Scratch Count
Core	25	PASS	0	0.00	PASS	0
Cladding	120	PASS	0	0.00	PASS	0
Adhesive	130	PASS	0	0.00	PASS	0
Contact	250	PASS	0	0.00	PASS	0

The automatic pass/fail determination is made in accordance with the IEC61300-3-35 standard.

G0306B Product Introduction

Saving the Measurement Results

You can manage the measurement results in either of the following ways.

Save to File

- Screen capture (PNG format)
- VIP data file (file with .vipi extension)

Load from File

- PNG file
- VIP data file (file with .vipi extension)

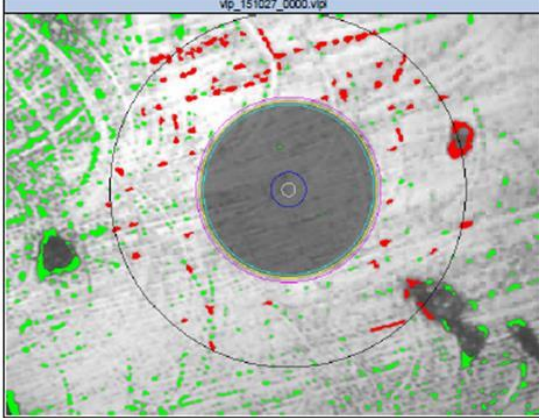
You can also create a PDF report on the system.

2015-10-27 09:28:04

VIP Test Results

Probe:	G0306A	Tip Type:	2.5PC-M			
Test Information						
Test Profile:	SM PC >45					
Analysis Results:	FAIL					
Analysis Details						
Zone Name	Diameter(μm)	Defects	Count	Area (μm ²)	Scratches	Count
Core	25	PASS	0	0.00	PASS	0
Transition	120	PASS	2	3.77	PASS	0
Adhesive	130	PASS	0	0.00	PASS	0
Contact	250	FAIL	203	2276.45	PASS	0

vip_151027_0000.vipi



Sample PDF Report

3

G0306B Product Introduction

MT9083x2 Series ACCESS Master Measurement Example



1. The VIP USB terminal is connected to the MT9083x2 series instrument's USB port.

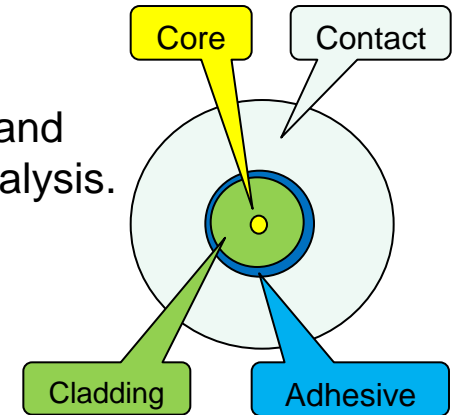
2. The power is turned on.
"Video Inspection Probe" is selected from the top menu.

*Before starting, select the appropriate tip for the connector adapter and ferrule type to be connected to.

G0306B Product Introduction

Measurement Sequence

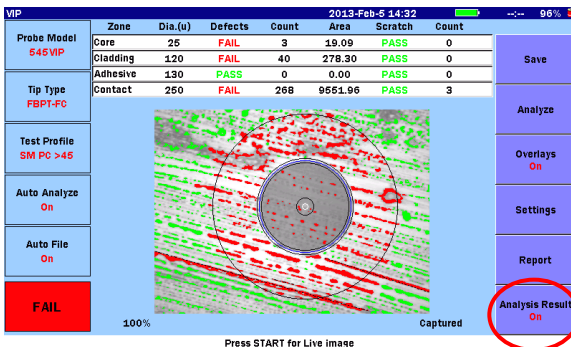
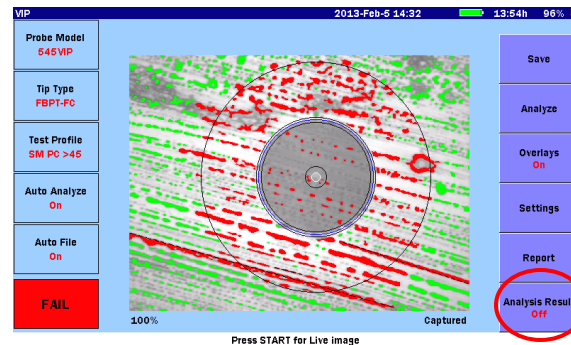
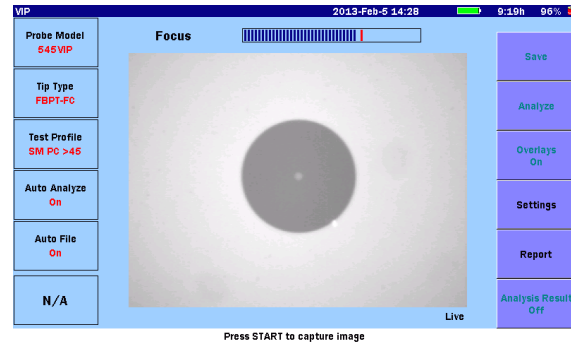
Adjust the focus in the Live screen, and press the Start  button to begin analysis.



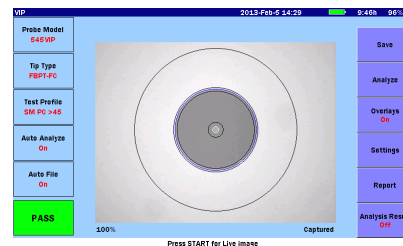
When analysis completes, the following information appears:

- Core
- Cladding
- Adhesive
- Contact

As well as a pass/fail determination for the total area for each.



Press f6 to toggle between Details (Table) and Image View.



G0306B Product Introduction

2013-Feb-5 4:43:2

Zone	Dia.(u)	Defects	Count	Area	Scratch	Count
Core	25	FAIL	3	19.09	PASS	0
Cladding	120	FAIL	40	278.30	PASS	0
Adhesive	130	PASS	0	0.00	PASS	0
Contact	250	FAIL	268	9551.96	PASS	3

Test Profile: SM_PC >4E

Tip Type: FBPT-FC

100%

Press START for Live image

Captured

FAIL

From the Table View, you can identify “defects” or “scratches” on the end of the fiber.

Zone	Dia.(u)	Defects	Count	Area	Scratch	Count
Core	25	FAIL	3	19.09	PASS	0
Cladding	120	FAIL	40	278.30	PASS	0
Adhesive	130	PASS	0	0.00	PASS	0
Contact	250	FAIL	268	9551.96	PASS	3

(1)

(2)

PASS

- (1) Defects in each area.
- (2) Scratches in each area.
- (3) Overall determination for each area merging (1) and (2)

Zone	Dia.(u)	Defects	Count	Area	Scratch	Count
Core	25	PASS	0	0.00	PASS	0
Cladding	120	PASS	0	0.00	PASS	0
Adhesive	130	PASS	0	0.00	PASS	0
Contact	250	PASS	0	0.00	PASS	0

The automatic pass/fail determination is made in accordance with the IEC61300-3-35 standard.

G0306B Product Introduction

Saving the Measurement Results

You can manage the measurement results in either of the following ways.

Save to File

- Screen capture (PNG format)
- VIP data file (file with .vipi extension)

Load from File

- PNG file
- VIP data file (file with .vipi extension)

You can also create a PDF report on the system.

2013-02-05 14:31:30

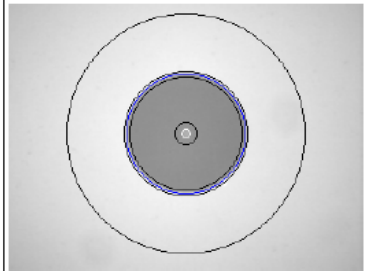
VIP Test Result

Probe Model	545VIP	Tip Type	FBPT-FC
-------------	--------	----------	---------

VIP Test Information	
Test Profile	SM PC >45
Analysis Result	PASS

Analysis Details						
Zone Name	Diameter	Defects	Count	Area	Scratches	Count
Core	25	PASS	0	0.00	PASS	0
Cladding	120	PASS	0	0.00	PASS	0
Adhesive	130	PASS	0	0.00	PASS	0
Contact	250	PASS	0	0.00	PASS	0

File Name

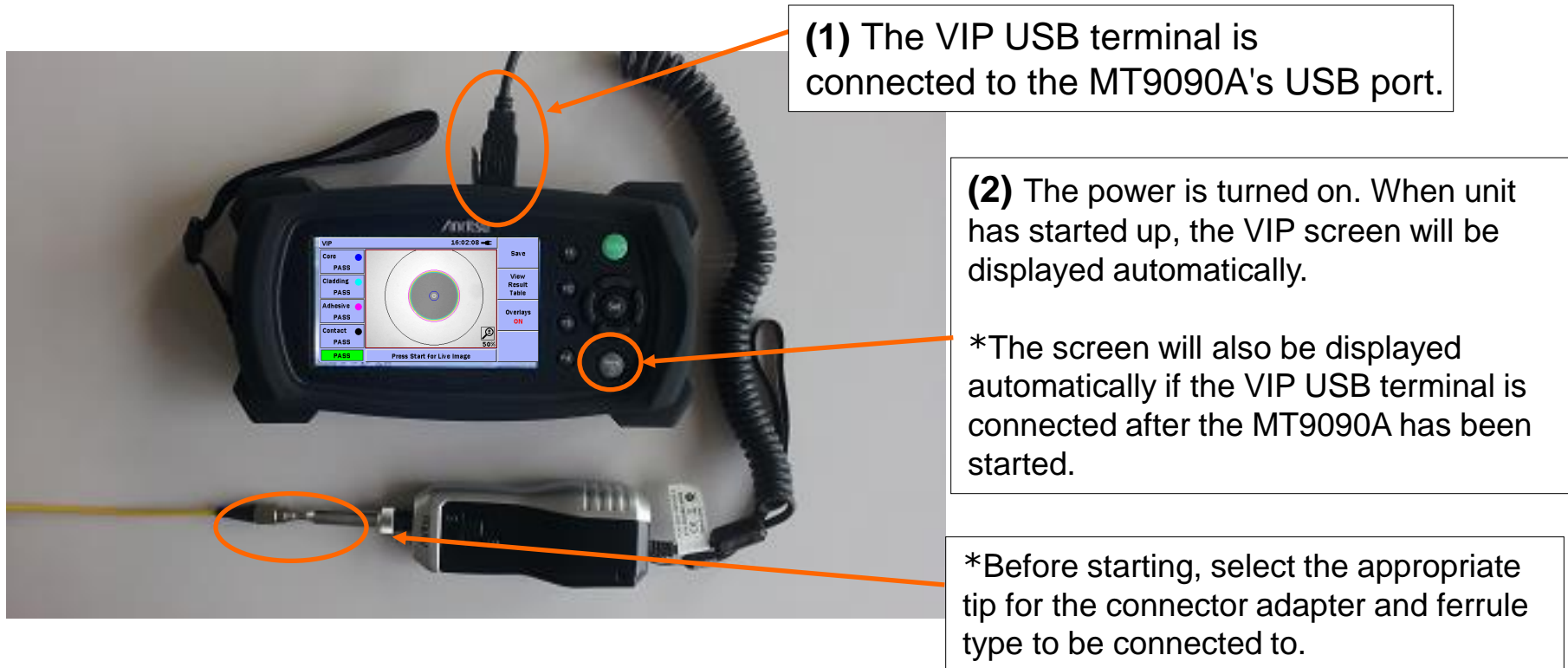


Capture Time 2013-02-05 14:28:59

Sample PDF Report

G0306B Product Introduction


Examples of Measurement Using the MT9090A Series μ OTDR (MU909014/15)

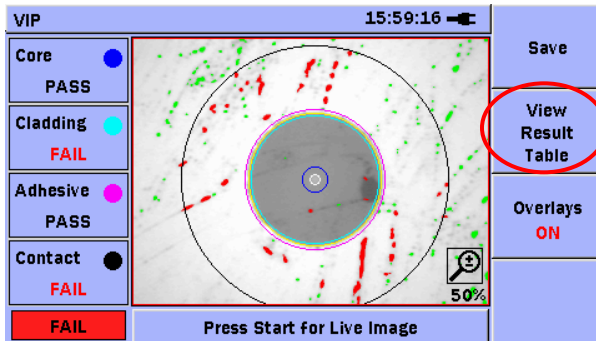
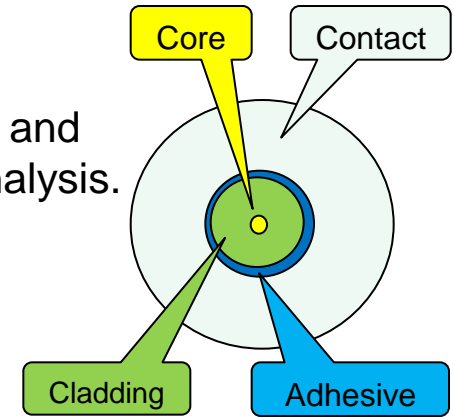


G0306B Product Introduction



Measurement Sequence

Adjust the focus in the Live screen, and press the Start  button to begin analysis.



When analysis completes, the following information appears:

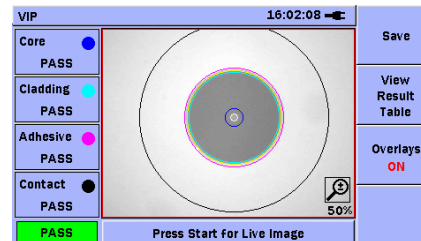
- Core
- Cladding
- Adhesive
- Contact

As well as a pass/fail determination for the total area for each.

Zone Name	Diameter (μ)	Result
1 Core	25	PASS
2 Cladding	120	FAIL
3 Adhesive	130	PASS
4 Contact	250	FAIL

Defects	Count	Area (μ^2)	Scratches	Count
1 PASS	0	0.00	PASS	0
2 FAIL	5	29.81	PASS	0
3 PASS	0	0.00	PASS	0
4 FAIL	85	1180.85	PASS	0

Press F2 to toggle between Details (Table) and Image View.



G0306B Product Introduction

VIP 15:59:27

	Zone Name	Diameter (μ)	Result
1	Core	25	PASS
2	Cladding	120	FAIL
3	Adhesive	130	PASS
4	Contact	250	FAIL

Save

(3) View Result Image

	Defects	Count	Area (μ^2)	Scratches	Count
1	PASS	0	0.00	PASS	0
2	FAIL	5	29.81	PASS	0
3	PASS	0	0.00	PASS	0
4	FAIL	85	1180.85	PASS	0

Overlays ON

FAIL (1) Press Start for Live Image (2)

From the Table View, you can identify “defects” or “scratches” on the end of the fiber.

- (1) Defects in each area.
- (2) Scratches in each area.
- (3) Overall determination for each area merging (1) and (2)

VIP 16:02:20

	Zone Name	Diameter (μ)	Result
1	Core	25	PASS
2	Cladding	120	PASS
3	Adhesive	130	PASS
4	Contact	250	PASS

Save

View Result Image

	Defects	Count	Area (μ^2)	Scratches	Count
1	PASS	0	0.00	PASS	0
2	PASS	0	0.00	PASS	0
3	PASS	0	0.00	PASS	0
4	PASS	0	0.00	PASS	0

Overlays ON

PASS Press Start for Live Image

The automatic pass/fail determination is made in accordance with the IEC61300-3-35 standard.

G0306B Product Introduction

Saving the Measurement Results

You can manage the measurement results in either of the following ways.

Save to File

- Screen capture (PNG format)
- VIP data file (file with .vipi extension)

Load from File

- PNG file
- VIP data file (file with .vipi extension)

You can also create a PDF report on the system.

Anritsu 2013-02-05 13:25:14

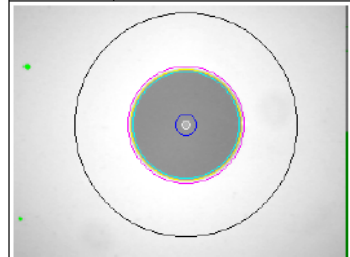
VIP Test Result

Probe	S45VIP	Tip	FBPT-FC
-------	--------	-----	---------

Test Information	
Test Profile	SM PC -45
Analysis Result	PASS

Analysis Details						
Zone Name	Diameter (μ)	Defects	Count	Area (μ ²)	Scratches	Count
Core	25	PASS	0	0.00	PASS	0
Cladding	120	PASS	0	0.00	PASS	0
Adhesive	130	PASS	0	0.00	PASS	0
Contact	250	PASS	0	0.00	PASS	0

File Name

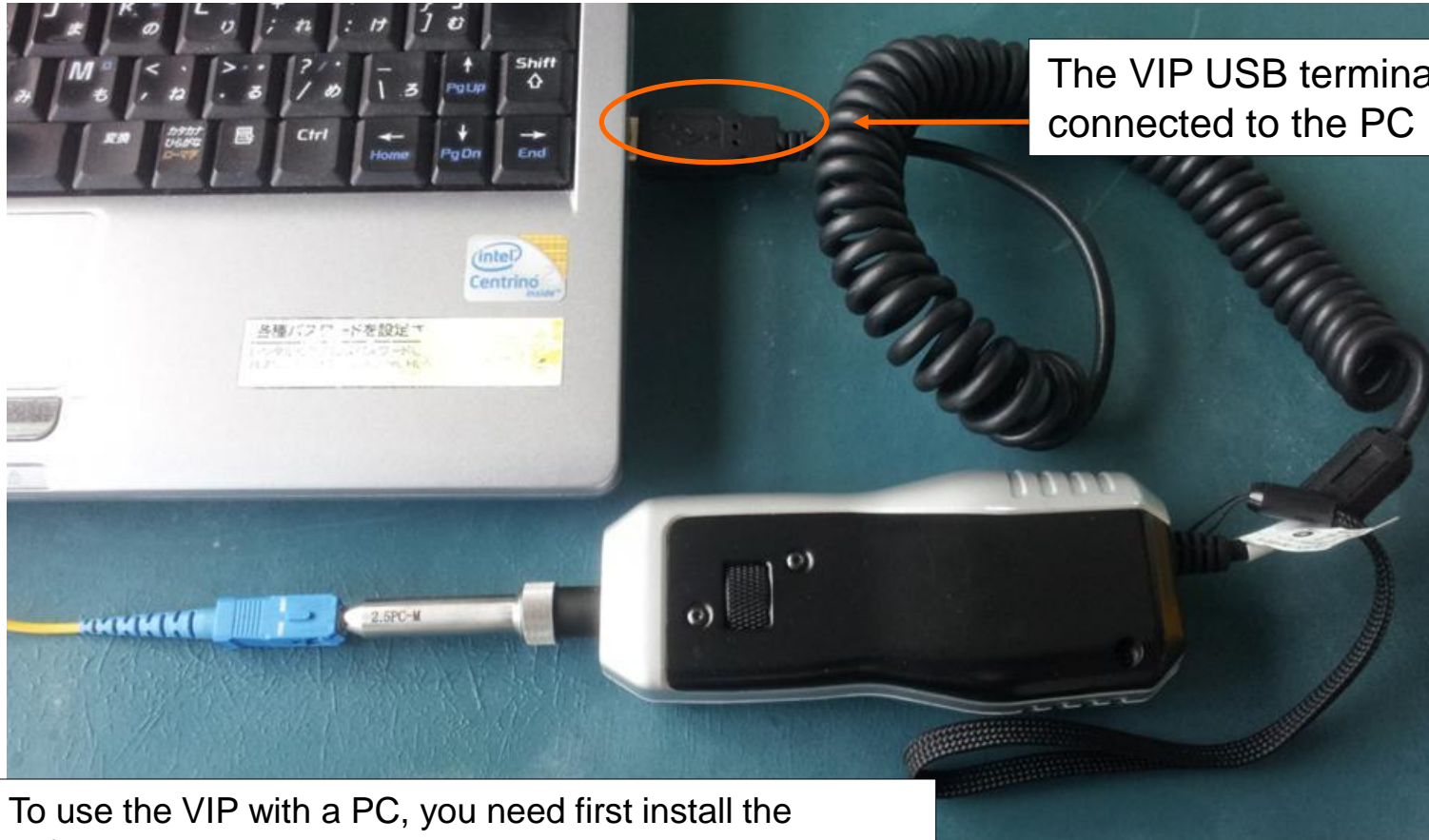


Capture Time 2013-02-05 13:24:24

Sample PDF Report

G0306B Product Introduction

Examples of Measurement With the Windows PC

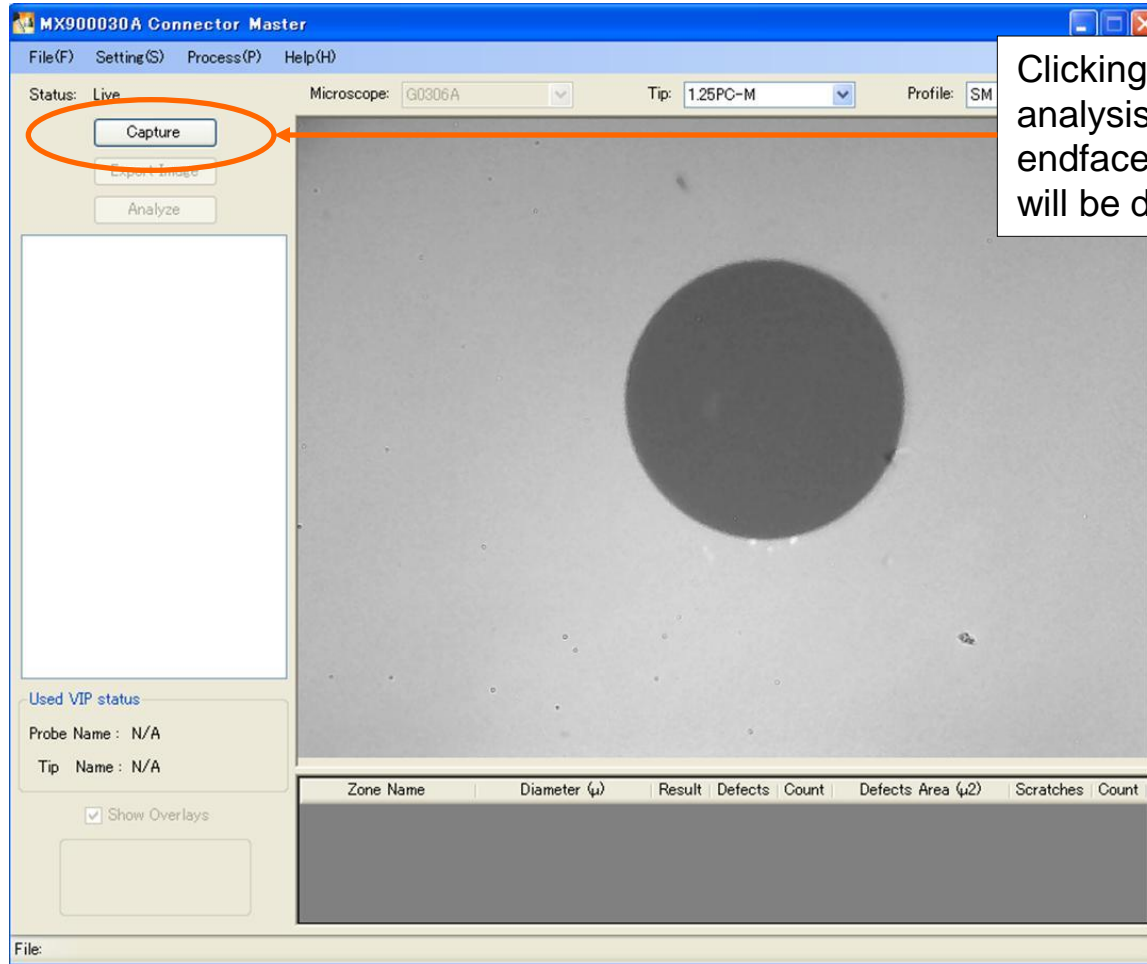


The VIP USB terminal is connected to the PC USB port.

To use the VIP with a PC, you need first install the software MX900030A.

G0306B Product Introduction

Examples of Measurement With the Windows PC



Clicking “Capture” will cause analysis to be performed. Ferrule endface dirtiness and damage levels will be displayed.

G0306B Product Introduction

Examples of Measurement With the Windows PC

MX900030A Connector Master

Status: Captured

Microscope: G0306A Tip: 1.25PC-M Profile: SM PC>45

Used VIP status

Probe Name: G0306A

Tip Name: 1.25PC-M

Show Overlays

Zone Name	Diameter (μ)	Result	Defects	Count	Defects Area (μ ²)	Scratches	Count
Core	25	PASS	PASS	0	0.00	PASS	0
Cladding	120	PASS	PASS	1	1.67	PASS	0
Adhesive	130	PASS	PASS	0	0.00	PASS	0
Contact	250	FAIL	FAIL	35	637.98	PASS	0

FAIL

When analysis completes, the following information appears:

- Core
- Cladding
- Adhesive
- Contact

As well as a pass/fail determination for the total area for each.

MX900030A Connector Master

Status: Captured

Microscope: G0306A Tip: 1.25PC-M Profile: SM PC>45

Used VIP status

Probe Name: G0306A

Tip Name: 1.25PC-M

Show Overlays

Zone Name	Diameter (μ)	Result	Defects	Count	Defects Area (μ ²)	Scratches	Count
Core	25	PASS	PASS	0	0.00	PASS	0
Cladding	120	PASS	PASS	1	4.35	PASS	0
Adhesive	130	PASS	PASS	0	0.00	PASS	0
Contact	250	PASS	PASS	1	4.02	PASS	0

PASS

G0306B Product Introduction

Ordering Information

Model No.			
G0306B	400x Video Inspection Probe		
- Standard accessories -	Operation manual (Printed) Soft Bug Seven Connector Tips - 1.25mm PC Male, - 2.5mm PC Male, - 2.5mm APC Male - 1.25mm PC Female(LC), - 2.5mm PC Female(FC) - 2.5mm PC Female(SC), - 2.5mm APC Female(SC)		
Application Parts			
Model No.		Model No.	
H0360A	2.5PC-M	H0366A	SC-APC-F
H0361A	1.25PC-M	H0372A	E2000-PC-F
H0362A	2.5APC-M	H0373A	FC-APC-F
H0363A	LC-PC-F	H0374A	MU-PC-F
H0364A	FC-PC-F	H0375A	ST-PC-F
H0365A	SC-PC-F	H0376A	1.25APC-M
		H0380A	LC65-PC-F

G0306B Supported...

- MT1000A Network Master Pro., MT1100A Network Master Flex.
- MT9083x2 ACCESS Master
- MT9090A Network Master (MU909014/15: μ OTDR)
- Windows XP, Windows7(32bit, 64bit) and Windows8(32bit, 64bit) PC for MX900030A

● **United States**

Anritsu Company

1155 East Collins Blvd., Suite 100, Richardson,
TX 75081, U.S.A.
Toll Free: 1-800-267-4878
Phone: +1-972-644-1777
Fax: +1-972-671-1877

● **Canada**

Anritsu Electronics Ltd.

700 Silver Seven Road, Suite 120, Kanata,
Ontario K2V 1C3, Canada
Phone: +1-613-591-2003
Fax: +1-613-591-1006

● **Brazil**

Anritsu Eletronica Ltda.

Praça Amadeu Amaral, 27 - 1 Andar
01327-010 - Bela Vista - Sao Paulo - SP
Brazil
Phone: +55-11-3283-2511
Fax: +55-11-3288-6940

● **Mexico**

Anritsu Company, S.A. de C.V.

Av. Ejército Nacional No. 579 Piso 9, Col. Granada
11520 México, D.F., México
Phone: +52-55-1101-2370
Fax: +52-55-5254-3147

● **United Kingdom**

Anritsu EMEA Ltd.

200 Capability Green, Luton, Bedfordshire, LU1 3LU, U.K.
Phone: +44-1582-433200
Fax: +44-1582-731303

● **France**

Anritsu S.A.

12 avenue du Québec, Bâtiment Iris 1- Silic 612,
91140 VILLEBON SUR YVETTE, France
Phone: +33-1-60-92-15-50
Fax: +33-1-64-46-10-65

● **Germany**

Anritsu GmbH

Nemetschek Haus, Konrad-Zuse-Platz 1
81829 München, Germany
Phone: +49-89-442308-0
Fax: +49-89-442308-55

● **Italy**

Anritsu S.r.l.

Via Elio Vittorini 129, 00144 Roma, Italy
Phone: +39-6-509-9711
Fax: +39-6-502-2425

● **Sweden**

Anritsu AB

Kistagången 20B, 164 40 KISTA, Sweden
Phone: +46-8-534-707-00
Fax: +46-8-534-707-30

● **Finland**

Anritsu AB

Teknobulevardi 3-5, FI-01530 VANTAA, Finland
Phone: +358-20-741-8100
Fax: +358-20-741-8111

● **Denmark**

Anritsu A/S

Kay Fiskers Plads 9, 2300 Copenhagen S, Denmark
Phone: +45-7211-2200
Fax: +45-7211-2210

● **Russia**

Anritsu EMEA Ltd.

Representation Office in Russia

Tverskaya str. 16/2, bld. 1, 7th floor.
Moscow, 125009, Russia
Phone: +7-495-363-1694
Fax: +7-495-935-8962

● **Spain**

Anritsu EMEA Ltd.

Representation Office in Spain

Edificio Cuzco IV, Po. de la Castellana, 141, Pta. 8
28046, Madrid, Spain
Phone: +34-915-726-761
Fax: +34-915-726-621

● **United Arab Emirates**

Anritsu EMEA Ltd.

Dubai Liaison Office

902, Aurora Tower,
P O Box: 500311- Dubai Internet City
Dubai, United Arab Emirates
Phone: +971-4-3758479
Fax: +971-4-4249036

● **India**

Anritsu India Private Limited

2nd & 3rd Floor, #837/1, Binnamangla 1st Stage,
Indiranagar, 100ft Road, Bangalore - 560038, India
Phone: +91-80-4058-1300
Fax: +91-80-4058-1301

● **Singapore**

Anritsu Pte. Ltd.

11 Chang Charn Road, #04-01, Shriro House
Singapore 159640
Phone: +65-6282-2400
Fax: +65-6282-2533

● **P.R. China (Shanghai)**

Anritsu (China) Co., Ltd.

Room 2701-2705, Tower A,
New Caohejing International Business Center
No. 391 Gui Ping Road Shanghai, 200233, P.R. China
Phone: +86-21-6237-0898
Fax: +86-21-6237-0899

● **P.R. China (Hong Kong)**

Anritsu Company Ltd.

Unit 1006-7, 10/F., Greenfield Tower, Concordia Plaza,
No. 1 Science Museum Road, Tsim Sha Tsui East,
Kowloon, Hong Kong, P.R. China
Phone: +852-2301-4980
Fax: +852-2301-3545

● **Japan**

Anritsu Corporation

8-5, Tamura-cho, Atsugi-shi, Kanagawa, 243-0016 Japan
Phone: +81-46-296-6509
Fax: +81-46-225-8359

● **Korea**

Anritsu Corporation, Ltd.

5FL, 235 Pangyoeyeok-ro, Bundang-gu, Seongnam-si,
Gyeonggi-do, 13494 Korea
Phone: +82-31-696-7750
Fax: +82-31-696-7751

● **Australia**

Anritsu Pty. Ltd.

Unit 20, 21-35 Ricketts Road,
Mount Waverley, Victoria 3149, Australia
Phone: +61-3-9558-8177
Fax: +61-3-9558-8255

● **Taiwan**

Anritsu Company Inc.

7F, No. 316, Sec. 1, NeiHu Rd., Taipei 114, Taiwan
Phone: +886-2-8751-1816
Fax: +886-2-8751-1817

Please Contact: